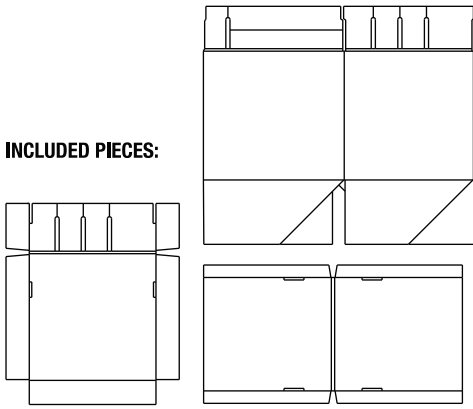


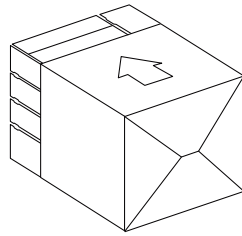
Supply Station (SKU 80006U01C)



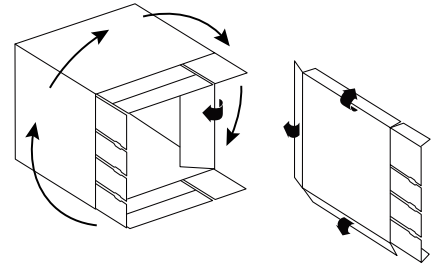
INCLUDED PIECES:



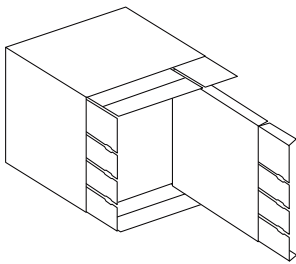
1 Fold down flap A followed by B & C then fold down flap D, inserting its tab into the slot formed by flaps A, B & C



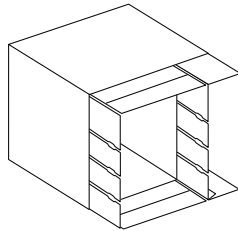
2 Turn the box upside down so that the vertical slot is on the right then fold down the right side flap as well as those of the divider.



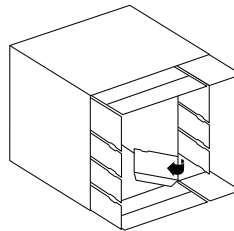
3 Insert the divider into the box



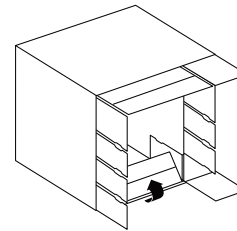
4 The divider's tabs should align with those of the box



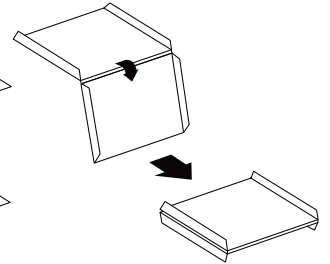
5 Fold in the right tab of the first slot



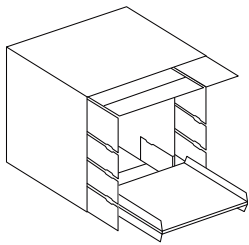
6 Fold in the bottom tab of the first slot



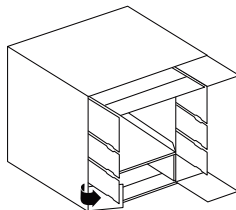
7 Fold the first shelf in half along its crease, ensuring that the tabs face outwards



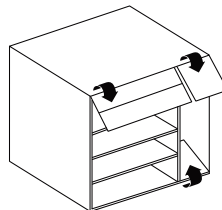
8 Insert the first shelf, aligning its height with that of the first tab



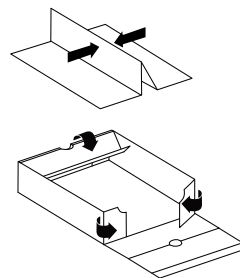
9 Fold in the left tab of the first slot. Repeat steps 5-9 for the remaining shelves



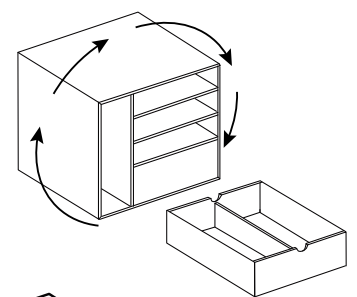
10 Fold in the top and bottom tabs of the vertical slot as well as the top tab of the uppermost slot



11 Fold the side flaps of the drawer upward while folding its tabs inward. Fold the front and back sides over the tabs then insert the folded divider

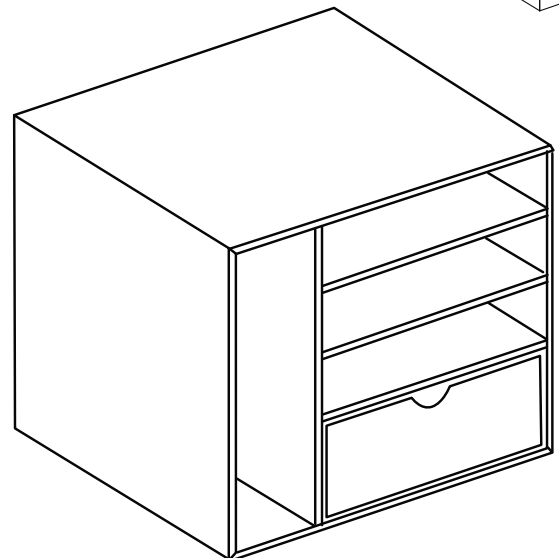


12 Turn the box right side up so that the vertical divider is on the left then insert the drawer



SCAN THIS QR CODE
TO ACCESS
ASSEMBLY VIDEOS
OR VISIT

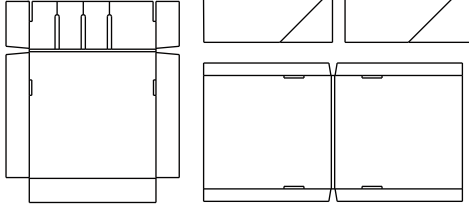
[youtube.com/storexindustries](https://www.youtube.com/storexindustries)



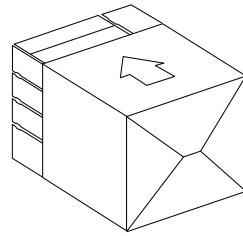
Range-tout de bureau (SKU 80006U01C)



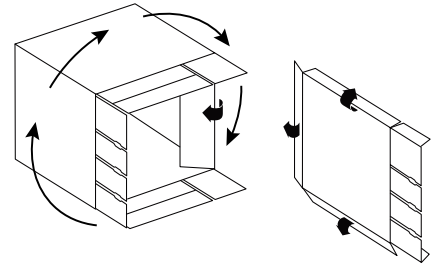
PIÈCES INCLUS:



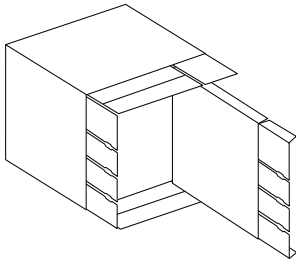
1 Pliez rabat A, suivi par B et C. Ensuite pliez rabat D, insérant sa languette dans la rainure créée par les rabats A, B et C



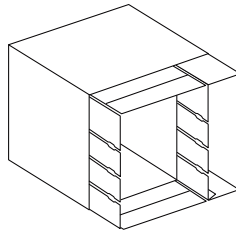
2 Mettez la boîte à l'envers pour que le compartiment vertical vienne à droite. Ensuite, pliez le rabat droit de la boîte ainsi que ceux du diviseur



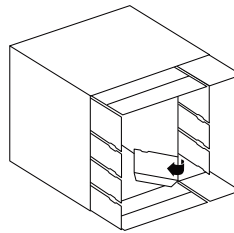
3 Insérez le diviseur dans la boîte



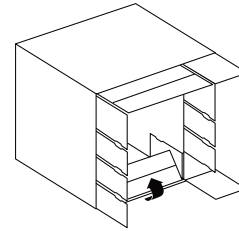
4 Les languettes du diviseur devraient s'aligner avec celles de la boîte



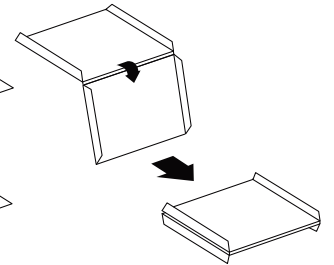
5 Pliez la languette droite de la première fente



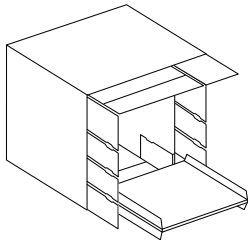
6 Pliez la languette du bas vers l'intérieur



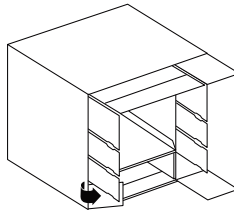
7 Pliez le premier plateau le long de son pliure, en assurant que ses languettes sont face à l'extérieur



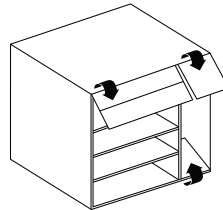
8 Insérez la première étagère, assurant qu'il sera au même niveau que le premier languette



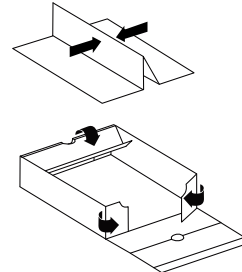
9 Pliez la languette gauche de la première fente. Répétez les étapes 5 à 9 pour les étagères qui restent



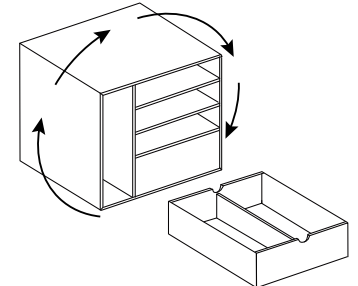
10 Pliez la languette supérieure et inférieure de la fente verticale vers l'intérieur ainsi que la languette supérieure du premier fente horizontale.



11 Pliez les rabats latérales vers le haut et pliez leurs languettes vers l'intérieur. Ensuite, pliez les rabats d'avant et arrière par-dessus les languettes latérales.



12 Tournez à l'endroit de sorte que la séparation verticale est sur la gauche puis insérez le tiroir



SCANNEZ CE CODE QR
POUR ACCÉDER AUX
VIDÉOS D'ASSEMBLAGE
OU VISITEZ
youtube.com/storexindustries

